



UNIVERSITY OF PORTSMOUTH

CENTRE FOR
CONTINUING
PROFESSIONAL
DEVELOPMENT



**Summer 2024:
24th June - 6th July**

Book now!



CCPD@port.ac.uk

Contents

- 1 Welcome to your Summer 2024 at the University of Portsmouth**
- 2 About your summer programmes**
- 3 Summer Schools**
 - 4 English Language and Culture
 - 5 English Language and Business
 - 6 Effective Research and Publication in Language Learning
- 7 Professional Development Programmes (CPD)**
 - 8 ELT Methodology: A Course for Teachers
 - 9 Translating and Interpreting for Teachers
- 10 Bespoke Programmes**
- 11 Your Activities**
- 12 Your Day Trips**
- 13 Where will I stay?**
- 14 Portsmouth, a vibrant seaside city!**
- 15 The Centre for Continuing Professional Development (CCPD)**
- 16 The School of Education, Languages and Linguistics (SELL)**
- 17 Pricing and Entry Requirements**
- 18 Terms and Conditions and Booking**
- 19 Campus map**



Welcome to summer 2024 at the University of Portsmouth!

Thank you for your interest in our range of Summer School and Continuing Professional Development programmes for summer 2024.

All programmes are developed by the Centre for Continuing Professional Development (CCPD) at the University of Portsmouth and is taught by academic staff from the School of Education, Languages and Linguistics (SELL).

All programmes take place at the University of Portsmouth campus which is based in the historic seaside city of Portsmouth. Participants will have access to a variety of travel links to London, Brighton and the Isle of Wight.

Our Summer Schools are accredited by the British Council:

Accredited by the



for the teaching of English in the UK



TOP 40
UNIVERSITY IN ENGLAND
FOR STUDENT SATISFACTION
NATIONAL STUDENT SURVEY 2022

94%
**GRADUATES
IN WORK**
AND/OR FURTHER STUDY
HESA GRADUATE OUTCOMES SURVEY 2019/20

86%
SATISFACTION WITH
COURSE QUALITY
POSTGRADUATE TAUGHT
EXPERIENCE SURVEY 2022



5,700
INTERNATIONAL STUDENTS
FROM AROUND 150 COUNTRIES

3,600 **31,000**
STAFF STUDENTS

INVESTING
£400M
IN OUR ESTATE MASTERPLAN



**UNIVERSITY OF
PORTSMOUTH**
CENTRE FOR
CONTINUING
PROFESSIONAL
DEVELOPMENT

About your summer programmes

We are pleased to invite you to our range of two week Summer School and CPD programmes where you will enjoy classroom sessions and attend cultural excursions and activities.

The academic content is focussed on English Language alongside subject-specific learning. Topics are fun, engaging and educational.

The cultural excursions and activities are organised and hosted by our dedicated CCPD support team. This team will arrange your collection when you arrive at the airport, organise your accommodation and be available to answer questions about your time with us.

Participants will work on a group presentation during their programme, and present it to each other and staff on the last day.

Here are some of our recent students, visiting London, and receiving their certificates at the end of their programme!



Summer Schools

Our summer schools provide educational holidays to help you develop skills, enable opportunities and enjoy our historic seaside city of Portsmouth.

These short courses are designed for students from international institutions to experience English culture and language while taking part in subject specific sessions. You'll study in class, but also enjoy excursions and day trips to local attractions. Our summer schools aim to improve your personal skills and experience, and give you an enjoyable study holiday.

We are pleased to offer a number of Summer School in 2024:

- **English Language and Culture**
- **English Language and Business**
- **Effective Research and Publication in Language Teaching - For PHD students**

Read on for details about each programme.



English Language and Culture

This programme offers you the opportunity to develop English language skills while taking part in cultural activities and excursions. This programme will develop early career skills and promote an understanding of working and learning in a British context.

Take a look our example timetable:

Week one

- Sunday - Airport arrival and transportation to accommodation
- Monday - Welcome and Introductions / Everyday language / Traditional British afternoon tea and tour of Portsmouth
- Tuesday - Introducing University study in the UK / Design a presentation
- Wednesday - Day trip to Portsmouth Historic Dockyard
- Thursday - Introduction to seminars and debating / Exploring British customs and cuisine
- Friday - Personal Development - Setting goals / 10-pin bowling
- Saturday - Free day

Week two

- Sunday - Free day
- Monday - Exploring cross-cultural issues / Critical thinking
- Tuesday - Colloquial English and dialects / Everyday language and customs
- Wednesday - Day trip to London
- Thursday - All about Britain fun quiz / Presentation preparation and practice
- Friday - Final group presentations / Certificate presentation / Farewell lunch / Free afternoon
- Saturday - Check-out of accommodation and return transfer to airport



English Language and Business

This programme offers you the opportunity to develop English language skills with a focus on business and management, while taking part in cultural activities and excursions. This programme will develop early career skills and promote an understanding of business in a British context.

Take a look our example timetable:

Week one

- Sunday - Airport arrival and transportation to accommodation
- Monday - Welcome and Introductions / Uses of marketing in business - brand development / Traditional British afternoon tea and tour of Portsmouth
- Tuesday - Introducing university study in the UK / Managing and motivating teams
- Wednesday - Day trip to Portsmouth Historic Dockyard
- Thursday - Business model innovation - use of AI / digital technology
- Friday - Case study: A case study analysis on issue management / 10-pin bowling
- Saturday - Free day

Week two

- Sunday - Free day
- Monday - Exploring cross-cultural issues / Exploring cross-cultural issues in a business context
- Tuesday - Organisation culture / collective intelligence
- Wednesday - Day trip to London
- Thursday - All about Britain fun quiz / Case study: Business ethics case
- Friday - Programme review / Certificate presentation / Farewell lunch / Free afternoon
- Saturday - Check-out of accommodation and return transfer to airport



Effective Research and Publication in Language Teaching - For PHD students

This course will support you in your professional development by providing input that allows you to reflect on your current teaching methodology, language practice and assumptions while also introducing new and innovative approaches to research writing and publication.

Take a look our example timetable:

Week one

- Sunday - Airport arrival and transportation to accommodation
- Monday - Welcome and Introductions / Understanding your research area and activity / Traditional British afternoon tea and tour of Portsmouth
- Tuesday - Language for scientific report writing / Communicative language teaching
- Wednesday - Day trip to Portsmouth Historic Dockyard
- Thursday - Using technology in language learning and teaching
- Friday - Using corpora in language / Teaching listening / Teaching reading
- Saturday - Free day

Week two

- Sunday - Free day
- Monday - Research methodologies / Skills for conducting effective research
- Tuesday - Writing and editing for scientific journals / Teaching writing
- Wednesday - Day trip to London
- Thursday - Materials design for teaching / Referencing masterclass / Preparing a thorough bibliography
- Friday - Programme review / Certificate presentation / Farewell lunch
- Saturday - Check-out of accommodation and return transfer to airport



Continuing Professional Development (CPD) programmes

If you are a teaching professional from an international institution or organisation looking to improve your English language or translation and interpreting skills, these short courses are for you.

Our courses will give you the opportunity to develop your skills in English language or translation, while also experiencing English culture and the island city of Portsmouth.

You'll take part in classes and also spend time on excursions and day trips to local attractions, improving your professional knowledge, skills and experience, and enjoying leisure time exploring the UK's historic south coast and bustling capital city.

We are pleased to offer a number of CPD programmes in 2024:

- **ELT Methodology: A course for teachers**
- **Translation and Interpreting for teachers**

Read on for details about each programme.



**UNIVERSITY OF
PORTSMOUTH**
CENTRE FOR
CONTINUING
PROFESSIONAL
DEVELOPMENT

ELT Methodology: A course for teachers

This programme is designed to support English language teachers in their professional development by providing input that allows them to reflect on their current language teaching practice and assumptions while also introducing new and innovative approaches to language teaching.

Take a look our example timetable:

Week one

- Sunday - Airport arrival and transportation to accommodation
- Monday - Welcome and introductions / The role of context in language teaching / Teaching English in a 'Glonacal' world / Traditional British afternoon tea and tour of Portsmouth
- Tuesday - Communicative English teaching
- Wednesday - Day trip to Portsmouth Historic Dockyard
- Thursday - Using technology in language learning and teaching / Using corpora in language learning and teaching
- Friday - Teaching reading / Teaching listening
- Saturday - Free day

Week two

- Sunday - Free day
- Monday - Teaching speaking / Teaching writing / Pragmatics for language teachers
- Tuesday - The evolution of reading / Models of motivation
- Wednesday - Day trip to London
- Thursday - Creative activities in the language classroom / Issues in language teaching
- Friday - Teacher development / Certificate presentation / Farewell lunch / Free afternoon
- Saturday - Check-out of accommodation and return transfer to airport



Translation and Interpreting for teachers

This programme is designed to support you in your professional development by providing input that allows you to reflect on your translation and interpreting skills while also introducing new and innovative approaches to language teaching and will include the use of our state-of-the-art Interpreting Suite.

Take a look our example timetable:

Week one

- Sunday - Airport arrival and transportation to accommodation
- Monday - Welcome and introductions / The role and importance of Translation and Interpreting in the current world / Teaching English in a 'Glonacal' world / Traditional British afternoon tea and tour of Portsmouth
- Tuesday - Asynchronous teaching of translation / Media accessibility
- Wednesday - Day trip to Portsmouth Historic Dockyard
- Thursday - Introduction to teaching and assessing Interpreting / Audio description
- Friday - Practice activities for developing interpreting skills / Teaching practical translation
- Saturday - Free day

Week two

- Sunday - Free day
- Monday - A brief history of modern Western translation theories / Translation technologies
- Tuesday - Current trends in Translation and Interpreting teaching / Material design for interpreting lessons
- Wednesday - Day trip to London
- Thursday - Research in translation studies / Professional aspects and ethics of translation and interpreting
- Friday - Programme review / Certificate presentation / Farewell lunch / Free afternoon
- Saturday - Check-out of accommodation and return transfer to airport



Bespoke Programmes

Alongside our Summer School and CPD programmes listed here, we also offer bespoke programmes tailored to the unique needs of our customers.

If you are working with a group of potential students and would like to discuss your idea further, please email CCPD@port.ac.uk.

We can discuss and plan a programme for you across a wide-range of subjects and areas of expertise form across the University of Portsmouth. We can adapt our standard programmes in duration, content, excursions, activities and subject.

We have experience working with educational institutions, organisations, agencies and governments to deliver high-class, quality programmes.



Your Activities

All Day Trips are chaperoned by trained and experienced staff, including first-aid trained staff.

Afternoon Tea & Walking Tour of Portsmouth

On your first day, you will be treated to a traditional British Afternoon Tea, followed by a tour of the University and Portsmouth city.



Enjoy 2 games of 10-pin bowling and a soft drink, escorted by CCPD support staff. Can you get a perfect score or a Strike?!

10-Pin Bowling*

British Sports Day*

Enjoy a lighthearted sports day featuring British school favourites, such as the 'egg and spoon race', 'three-legged race' and 'tug-of-war'.



**Summer Schools only*



**UNIVERSITY OF
PORTSMOUTH**
CENTRE FOR
CONTINUING
PROFESSIONAL
DEVELOPMENT

Your Day Trips

All Day Trips are chaperoned by trained and experienced staff, including first-aid trained staff.

Portsmouth Historic Dockyard

Journey through time at Portsmouth Historic Dockyard. Visit HMS Victory and see Nelson's legendary warship, dive deep on-board HMS Warrior or visit the Mary Rose museum, featuring the remains of King Henry VIII's flagship, raised from the depths in 1982!

You will be taken by coach to the City of London for a guided tour. You will see the sights of London and have plenty of opportunities to take photographs and buy souvenirs. Landmarks will include Buckingham Palace and the Houses of Parliament.

Walking tour of London



Where will I stay?

Accommodation is included in the cost of your programme.

You will stay in one of our University halls of residence. Your room may comprise of a single standard en-suite room or room with shared bathroom facilities set out in a self-contained flat of five bedrooms. All rooms include a single bed, wardrobe, desk and chair. A bedding pack is included which is yours to keep.

You will either be self-catered using a shared kitchen or be catered (breakfast and dinner provided)**.

All our Halls have a main reception where staff are available 24/7.

Accommodation is located in Portsmouth city centre and is a short walk from Portsmouth and Southsea train station.

***Subject to availability and preference*

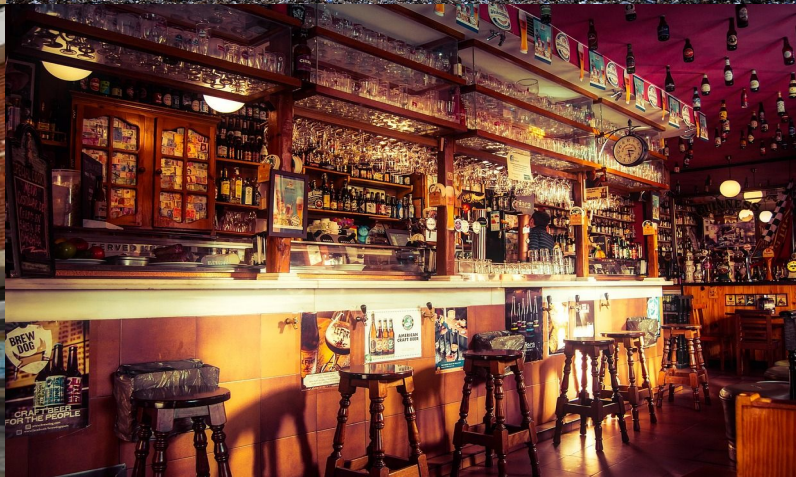


Portsmouth, a vibrant seaside city!

You will be greeted by miles of beautiful beaches, pretty green spaces and a friendly atmosphere.

In June and July you can expect hot summer weather, cooled by the breeze from the coast. There may be the occasional rainy day though, so pack a raincoat, just in case!

Spend your evenings watching the sunset on the beach, or having a drink with friends in one of our many friendly pubs, or go crazy in the shopping centres, buying lots of quality brands and souvenirs!



The Centre for Continuing Professional Development (CCPD)

The CCPD is responsible for your wellbeing and enjoyment while you are with us. We pride ourselves in providing an excellent, fun and memorable Summer School experience to all our students.

Since 2017 we have welcomed students and staff from institutions from around the world, including Uzbekistan, China and Panama and we are working with a number of clients, including institutions in Brazil, India, France, Tajikistan, Taiwan, the United States of America and within the UK, on a number of future projects and programmes. So you can see that we have a global outlook and enjoy meeting students from all over the world. During your time with us, we will be take you on day trips, guide you around Portsmouth and be on hand to support you every day.

Below you will see more happy groups of Summer School students during their time with us!



The School of Education, Languages and Linguistics (SELL)

At the School of Education, Languages and Linguistics (SELL), our research explores how education, language and linguistics are used and effective in varying contexts. We believe it is essential that students benefit from an excellent learning experience.

Understanding how we communicate is increasingly important in meeting the demands of international business, tackling global crises and giving people a voice.

We have three principles underpinning our work: a global perspective, high quality learning and teaching, and personalised support for students.

We have a wealth of expertise and experience that we look forward to sharing with our students!



Pricing and Entry Requirements

The price quoted for these programmes includes airport transfers, tuition, guided excursions and activities (meals where indicated on timetable) and accommodation.

Price per person, summer 2024: **£2200**

Discounts:

If you are a student or member of staff at an institution with a Memorandum of Understanding with the University of Portsmouth a 20% discount is available.

Free teacher place (Summer Schools only):

If we receive 10 bookings from one institution, one free teacher place is available.

Entry requirements

To be eligible to attend one of our programme, you must:

- Be aged eighteen or over by the course start date
- Speak English to intermediate level
- Have a valid passport
- Be employed in a profession relevant to the course content (*CPD programmes only*)
- Be undertaking a PHD programme in a language related field at a recognised institution (*PHD Summer School only*)



Terms and Conditions and Booking

- Collections from London Gatwick or London Heathrow are included in the price of your programme. Collections to/from Stansted airport or an alternative London airport will incur an additional charge of £25 per participant each way.
- Before Visa invitation letters can be issued, all participants must have paid in full. To ensure adequate time for visa issuance and travel to the UK, full payment must have been received at least 8 weeks prior to the start of the programme. Flight details must be confirmed at least 2 weeks prior to the start of the programme.
- The dates proposed cannot be changed once booked.
- We require a minimum of 10 students per programme for it to run.
- Once payment has been made the programme will proceed and bookings will be made by the CCPD administration team based on the agreed brief.
- If for any reason a delegate cancels the programme once payments have been made, a refund will be made minus any costs already incurred by the University of Portsmouth.
- If a delegate wishes to cancel at their own discretion before or during the programme a refund will be made minus any costs already incurred by the University of Portsmouth.
- If for any reason the University of Portsmouth cancels this programme all students will receive a full refund.

To book your place please scan the QR code:

If you have any questions, please email
CCPD@port.ac.uk



**UNIVERSITY OF
PORTSMOUTH**
CENTRE FOR
CONTINUING
PROFESSIONAL
DEVELOPMENT

Campus Map

