

Welcome!

INSEEC BBA / BORDEAUX
INTERNATIONAL PROGRAMMES

Create YOUR OWN
**INTERNATIONAL
FUTURE**



Introduction



197
CAMPUSES IN FRANCE AND ABROAD



35 000
STUDENTS



800
PERMANENT PROFESSORS



13
SCHOOLS



180 000
ALUMNI



345
RESEARCH TEACHERS



5
FIELD OF EDUCATION

*Management, Engineering,
Communication, Design &
Creation, Political Science &
International Relations*



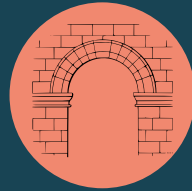
6
INCUBATORS



BORDEAUX CAMPUS



CAPITAL OF SOUTHWEST OF FRANCE



*BORDEAUX "CITY OF ART AND HISTORY"
AND UNESCO WORLD HERITAGE SITE*



1 CAMPUS IN THE HEART OF THE CITY



WINE CAPITAL OF THE WORLD



5000 STUDENTS



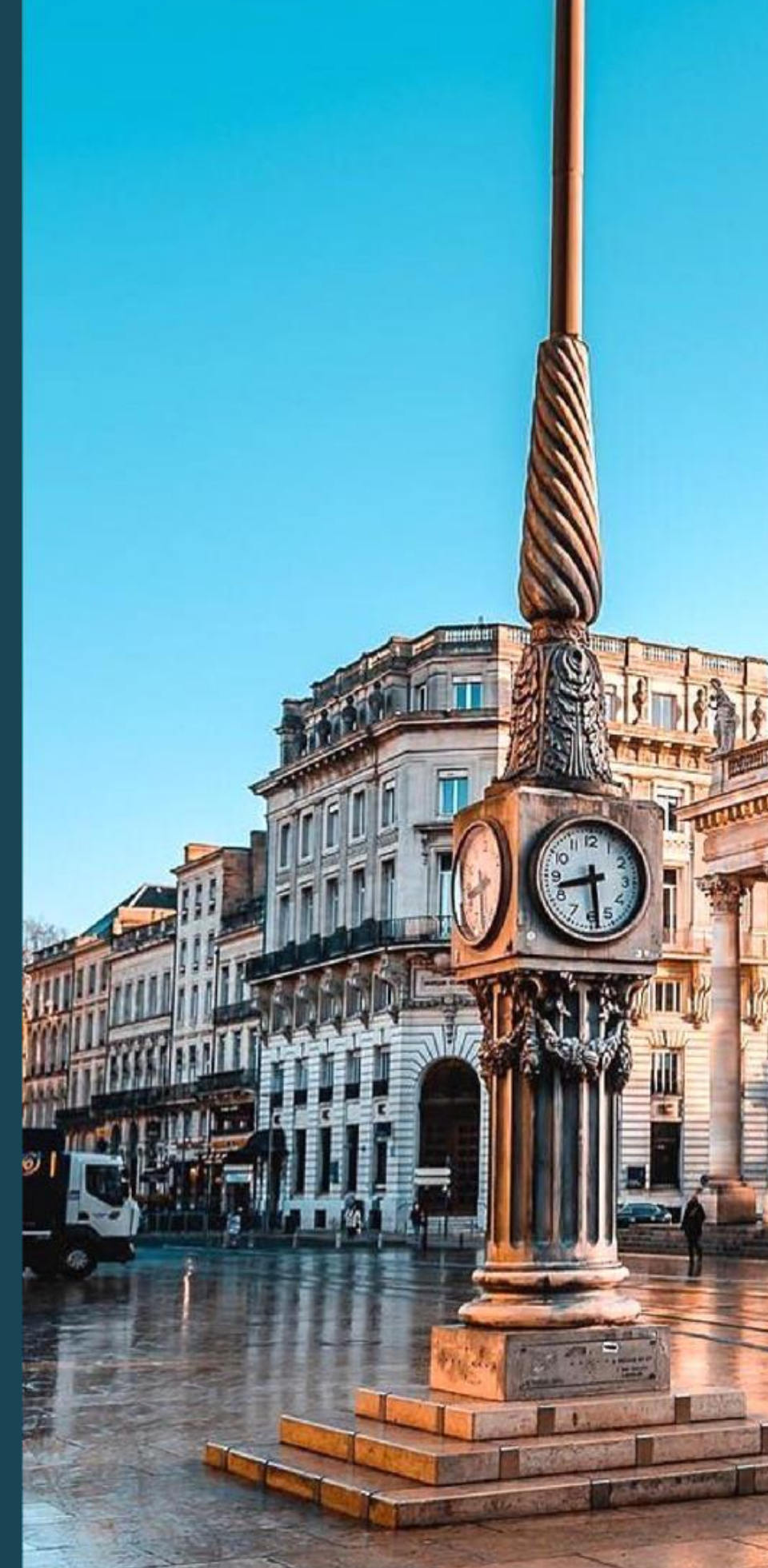
*CLOSE TO THE ATLANTIC OCEAN, THE PYRÉNÉES
MOUNTAINS AND SPAIN*



7 SCHOOLS / 68 CLASSROOMS



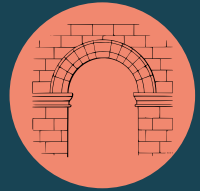
2 HOURS FROM PARIS WITH THE TGV



LYON CAMPUS



2ND LARGEST CITY OF FRANCE



UNESCO WORLD HERITAGE SITE



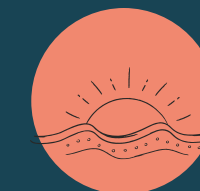
1 CAMPUS IN THE HEART OF THE CITY



A CITY VOTED WORLD CAPITAL OF GASTRONOMY



8000 STUDENTS



**CLOSE TO THE ALPS MOUNTAINS,
THE FRENCH RIVIERA, SWITZERLAND
AND ITALY**



10 SCHOOLS / 80 CLASSROOMS



2 HOURS FROM PARIS WITH THE TGV



OUR SCHOOL'S VALUES

160 PARTNER
UNIVERSITIES

OPENING
TO THE INTERNATIONAL
(BAC+4 FORMAT)



PEDAGOGICAL
EXPERTISE
(STATE VISA)



EMPLOYABILITY



OUR MANAGEMENT PROGRAMMES

Weblink: [INSEEC BBA Academic Offer](#)

Students may choose to attend one-semester or one-year programmes:

FALL SEMESTER PROGRAMMES

BELCO (Bordeaux Campus)

ATLANTIS (Lyon Campus)

The perfect exchange programmes (Full English)

BBA3 and BBA4

Share the French students' experience (French + English or Full English)

SPRING SEMESTER PROGRAMME

BBA3

A programme for both international and French students: it's all about sharing (Full English)



ACADEMICS

Weblink: [INSEEC BBA Academic Offer](#)

STUDY

35 STUDENTS BY CLASS

INTERNATIONAL & FRENCH STUDENTS ON MIXED CLASSES

SEMESTER DATES

FALL: BEGINNING OF SEPTEMBER - MID OF DECEMBER

SPRING: MID FEBRUARY - END OF MAY

SEMESTER BREAK: 2-WEEK BREAK AT CHRISTMAS

1-WEEK BREAK DURING EACH SEMESTER

APPLICATION REQUIREMENTS

TRANSCRIPT OF RECORDS (IN ENGLISH)

PROOF OF ENGLISH PROFICIENCY (B2)

IDENTITY CARD OR PASSPORT

COPY OF EUROPEAN HEALTH INSURANCE POLICY (FOR EU CITIZENS)

PASSPORT PHOTO

GRADES

GRADING SCALE OUT OF 20

THE MINIMUM PASSING GRADE IS 10/20





COST OF LIVING IN LYON / BORDEAUX

1

HOUSING
€700-1000
+ utilities
per month

2

TRANSPORT
€40 per
month

3

FOOD
€200

4

MONTHLY
PERSONAL
EXPENSES
€160-200

TOTAL: €1200-1500

*Weblinks: [Accommodation and Facilities Guides](#)
[OMNES Education Welcome Guide](#)
[Help center \(lavin-france.com\)](#)*



HOUSING

BBA INSEEC DOES NOT HAVE ON-CAMPUS HOUSING BUT ASSISTS STUDENTS IN FINDING ACCOMODATION AND HAVE PARTNERS TO FACILITATE RESEARCH

APL / CAF: STUDENT HOUSING AID

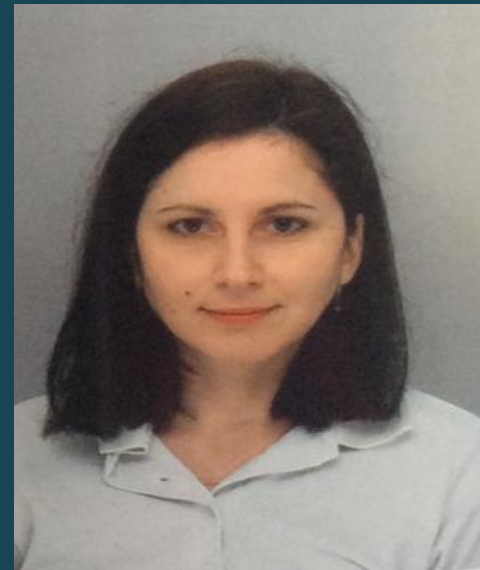
**FOREIGN STUDENTS STUDYING IN FRANCE ARE ELIGIBLE FOR HOUSING BENEFITS. IF YOU RENT AN APPARTMENT ALONE YOU COULD RECEIVE: €190 / MONTH
COLOCATION: €90 / MONTH**

INSEEC BBA

INTERNATIONAL RELATIONS CONTACTS



Florence CARLOT
Bordeaux Campus
fcarlot@omneseducation.com



Sarah FREYNE
Bordeaux Campus
sfreyne@omneseducation.com



Manon TURLIN
Lyon Campus
mturlin@inseec.com



BBA INSEEC



BBA_INSEEC



BBA_INSEEC



BBA INSEEC

JOIN US AND FOLLOW OUR NEWS!